

1/3
of previous
model*1

NEW

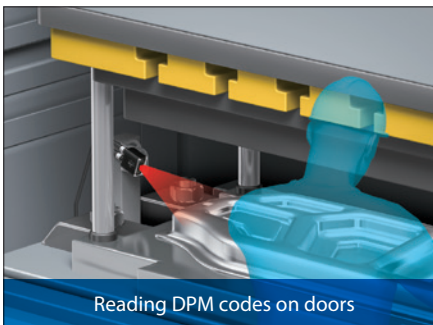
Auto Focus Multi Code Reader
V430-F Series

Smallest^{*2}
in class

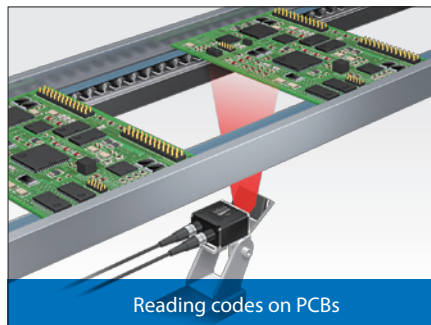
*1. Comparison of the V430-F (44.5 x 44.5 x 25.4 mm) and previous model FQ-CR2 (38 x 46 x 108 mm).
*2. Fixed mount multi code readers with 1.2 Mpix or more. Based on Omron investigation in March 2018.

► Easy to integrate

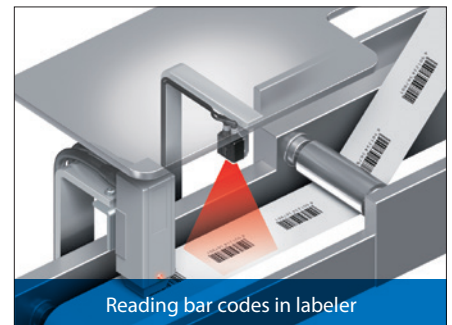
Application in automotive industry



Application in digital industry



Application in F&B/pharma industry



**Optional right angle connectors and
right angle mirror for saving space**



Right angle mirror



Right angle connector

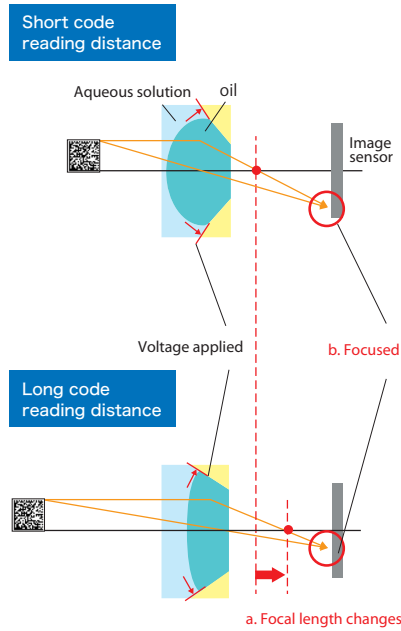
Note. Right angle down (photo above) and right angle up connectors are available.

▶ Long life autofocus

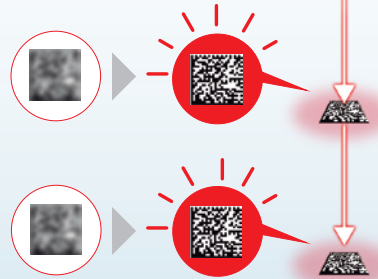
Liquid lens for unlimited autofocus

Code readers using a mechanical focus mechanism generally break due to deterioration of the drive mechanism or motor when they perform autofocus tens of thousands of times. The V430-F Series, on the other hand, uses a liquid lens that does not need a drive mechanism or motor, providing unlimited autofocus and long life.

The liquid lens can flexibly change its focal length by applying voltage to change the internal oil and water shape. (a in right figure) In addition, the V430-F Series precisely focuses on objects using the code search algorithm. (b in right figure)



No worry about breakdown even when distance to code varies due to frequent changeover



▶ Continuous Autofocus

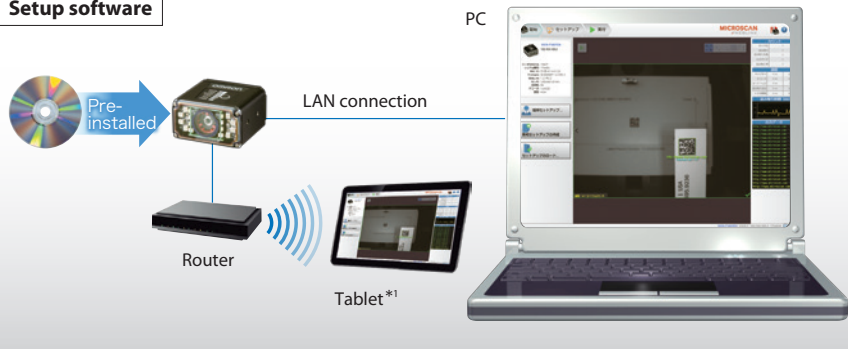
The code stays in focus even when the reading distance is changed

▶ Easy troubleshooting

Quick troubleshooting from web browser

The V430-F Series has pre-installed software for setup. There is no software to install or update. You can easily troubleshoot using a PC or tablet with the browser-based interface.

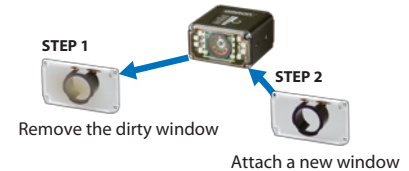
Setup software



*1. The tablet must be connected to a wireless LAN.

Refer to the datasheet (Cat. No. Q258) for details.

Easy replacement of dirty window



Print Quality Grading function to avoid problems

This function enables an in-line check of the relative quality change and the parameter where the change occurred.

Applicable standards

ISO/IEC 15415
ISO/IEC 15416
ISO/IEC TR29158
(AIM DPM -1-2006)*2
ISO/IEC 16022

*2. Data Matrix only.

OMRON Corporation Industrial Automation Company
Kyoto, JAPAN

Contact: www.ia.omron.com

Regional Headquarters

OMRON EUROPE B.V.
Wegalaan 67-69, 2132 JD Hoofddorp
The Netherlands
Tel: (31)2356-81-300/Fax: (31)2356-81-388

OMRON ASIA PACIFIC PTE. LTD.
No. 438A Alexandra Road # 05-05/08 (Lobby 2),
Alexandra Technopark,
Singapore 119967
Tel: (65) 6835-3011/Fax: (65) 6835-2711

OMRON ELECTRONICS LLC
2895 Greenspoint Parkway, Suite 200
Hoffman Estates, IL 60169 U.S.A.
Tel: (1) 847-843-7900/Fax: (1) 847-843-7787

OMRON (CHINA) CO., LTD.
Room 2211, Bank of China Tower,
200 Yin Cheng Zhong Road,
PuDong New Area, Shanghai, 200120, China
Tel: (86) 21-5037-2222/Fax: (86) 21-5037-2200

Authorized Distributor:

© OMRON Corporation 2018 All Rights Reserved.
In the interest of product improvement,
specifications are subject to change without notice.

CSM_1_1_0418
Cat. No. Q262-E1-01

0418(0418)